



TYPE 809 and 810

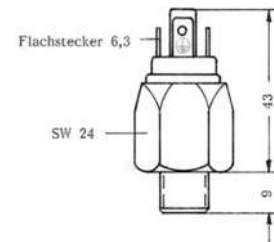
Pressure switch
Normally closed contact (Type 809)
Normally open contact (Type 810)

Flat connector 6,3
Width across flats 24
Thread length 9mm

	ADJUSTMENT RANGE [mbar]	OVERPRESSURE SAFETY	ORDER NUMBER	
			NC CONTACT	NO CONTACT
DIAPHRAGM	0,2 – 1	300 bar	809-1-ABC	810-1-ABC
	1 – 10		809-10-ABC	810-10-ABC
	2 – 20		809-20-ABC	810-20-ABC
	10 – 100	600 bar	809-100-ABC	810-100-ABC
	20 – 200		809-200-ABC	810-200-ABC
PISTON	10 – 100	600 bar	809-100-ABC	810-100-ABC
	20 – 200		809-200-ABC	810-200-ABC

REPRODUCIBILITY	~ 5%	ELECTRICITY MAX.	2 Amp.
HYSTERESIS	~ 5-10%	TYPE OF PROTECTION	IP 55
SWITCHING ELEMENT	NC contact 809 NO contact 810	PERMISSIBLE TEMP.	-20° to +100° C
SWITCHING FREQUENCY	200/min	WEIGHT	0,09 kg
VOLTAGE	250 Volt		

A Kant pressure switch Type 809 and 810 has an integrated N.C. / N.O. contact. When pressure is applied, a diaphragm is deformed or a piston is displaced via a lifting movement. The deformation or movement depends on an adjustable spring preload. When the switching point is reached, the diaphragm or piston has undergone a defined movement which actuates the switch and opens or closes the electrical circuit. Specific pressure values can be monitored via the switching signal.



With device connector DIN 43650

A Thread

	A
G 1/8	1
G 1/4	2
M 10X1 CYLINDRICAL	3
NPT 1/8	4
R 1/8 TAPERED	5
M 10X1 TAPERED	6
M 12	7
M 12X1,5	8
NPT 1/4	9

B Sealing element

	B	APPLICATION
DIAPHRAGM	NBR	1 Hydraulic oil, Machine oil, Heating oil, Nitrogen, sea water
	FKM (VITON)	2 Hydraulic fluids, Petrol, Alcohol, Salt and Sulphuric acid
	EPDM (APTK)	3 Hydrogen, Brake fluid, Acetylene, etc.
	SILICONE	4 Food, Water etc.
PISTON	PISTON SEALING	8 Oil
	PISTON SEALING	9 Hot water

C Body material

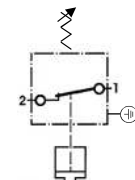
	C
STEEL GAL ZN 5	1
VA 1.4305	2
BRASS 60	3
VA 1.4571	8

D Customized version

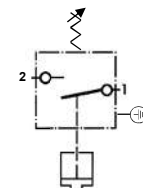
	D
MICROSWITCH WITH GOLD PLATED CONTACTS	5

The Open, Close or Change function refers to increasing pressure.

CONNECTION 809:



CONNECTION 810:



➔ Order Number Example:

